



Monthly Report



Humanitarian Response

January 2025



Gaza

Strip

The situation in the PRCs's branches in Gaza.

- The participation of ambulance and emergency teams in the process of retrieving the martyrs' bodies from the streets and destroyed homes, in coordination with various specialized authorities.
- The ambulance centers in the Rafah and North Gaza governorates were reopened after being forcibly shut down due to occupation measures.
- The association's hospital teams continue to provide medical services to citizens in Khan Younis governorate through the Al-Amal, Kuwaiti Field, and Jerusalem Field Hospitals.
- The association's teams began cleaning and repairing the Jerusalem Hospital in Gaza governorate in preparation for its reopening after being out of service since 14/11/2023.
- The teams started transferring the Kuwaiti Field Hospital from Khan Younis governorate to Gaza governorate to begin operations in February.
- The teams also moved the Jerusalem Field Hospital to Rafah governorate, but it has not been activated yet.
- Several medical clinics that were shut down due to occupation measures in Rafah and North Gaza governorates have been rehabilitated and reopened.
- The teams distributed food and relief parcels and drinking water based on availability.



The main challenges:

- The lack of respect for the Red Crescent emblem and the targeting of the association's facilities and teams, which led to the martyrdom and injury of several members, and the forced closure of the association's facilities, especially in Gaza, North Gaza, and Rafah governorates, due to direct and deliberate targeting of the association.
- The threat to the safety and lives of the teams in the absence of guarantees for security and safety, even for missions coordinated in advance with international organizations.
- The prevention of the entry of equipment and personal protective tools for the association's teams.
- The continuous depletion of the association's human and material resources.
- The ongoing displacement situation and repeated orders for forced evacuations of citizens, which increase the burden on the association.
- The shortage of fuel has negatively impacted vehicle movement and the speed of response to cases, as well as the slow pace of relief operations.
- The unavailability of medicines and medical supplies to meet the citizens' needs.
- The damage to relief materials stuck at the crossings, with the association bearing the cost of their transportation.
- The significant psychological pressures on the working teams due to the aggression and the difficult economic and social conditions.
- The coordination procedures in place through international organizations are insufficient and ineffective in most cases.
- Damage to the central VHF wireless communication system, the only one available, and the confiscation of several handheld devices, in the absence of effective alternatives.
- Difficulty for employees and volunteers in reaching their workplaces due to ongoing shelling.
- The closure of the local market and the lack of cash liquidity.
- Difficulty in sorting and distributing humanitarian aid due to the closure of the association's warehouses.

Health



Emergency Medical Services

- The teams evacuated (393) martyrs.
- They provided first aid services to approximately (5,931) cases, including injuries from shelling and emergency medical conditions.
- The teams conducted (4) first aid training courses for about (79) individuals, including (61) females. One course was held at the PRCS's branch in Khan Younis, and the rest were conducted in the IDPs centers the Mawasi area of Khan Younis.
- During the return of displaced persons to the northern governorates after the ceasefire, the PRCS set up (4) emergency points for a week along Al-Rasheed and Salah al-Din Streets. Additionally, (6) first responder teams were deployed to contribute to meeting the humanitarian and health needs of the returnees.
- The teams also transferred around (92) decomposed bodies.



393

Martyr



5,931

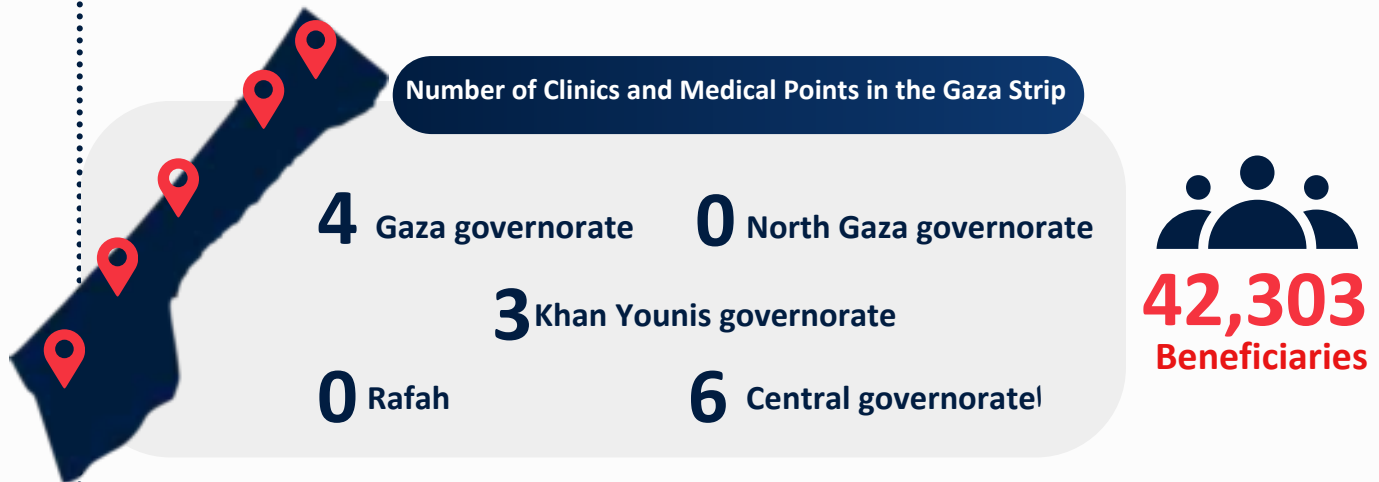
Injuries and emergency
medical cases





Medical points & clinic

Providing healthcare and emergency services to communities through these clinics and medical points.





Hospitals:

Providing secondary and tertiary emergency care services to affected communities.

► Al-Amal Hospital:

Emergency cases, including surgeries: **20,703**

Support services: **22,325**

► Al-Quds Hospital:

PRCS started rehabilitating the emergency and surgery departments in this hospital located in Gaza City.



Field Hospitals:

Kuwaiti Field Hospital

5,388

Emergency cases,
including surgeries

1,784

Support
services

Al-Quds Field Hospital

7,244

Emergency cases,
including surgeries

3,329

Support
services





Psychosocial Support

PRCS teams provide psychosocial support services and psychological first aid to affected individuals in hospitals, PRCS IDPs centers and other centers distributed across the Gaza Strip. These services also target the PRCS staff and volunteers.



56,735
Beneficiaries

Including:



25,880



29,237



27,498



Emergency and Disaster Management

Relief and Risk Reduction

Providing immediate and urgent relief assistance to communities.

3,883 food and relief parcels distributed

31,971 awareness campaigns on unexploded objects



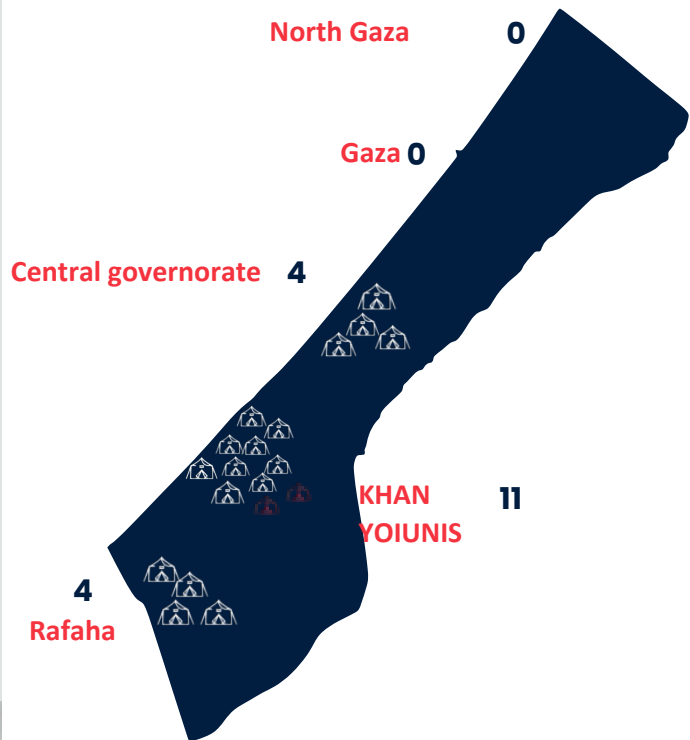
Shelters

These centers accommodate approximately (8,945) families.

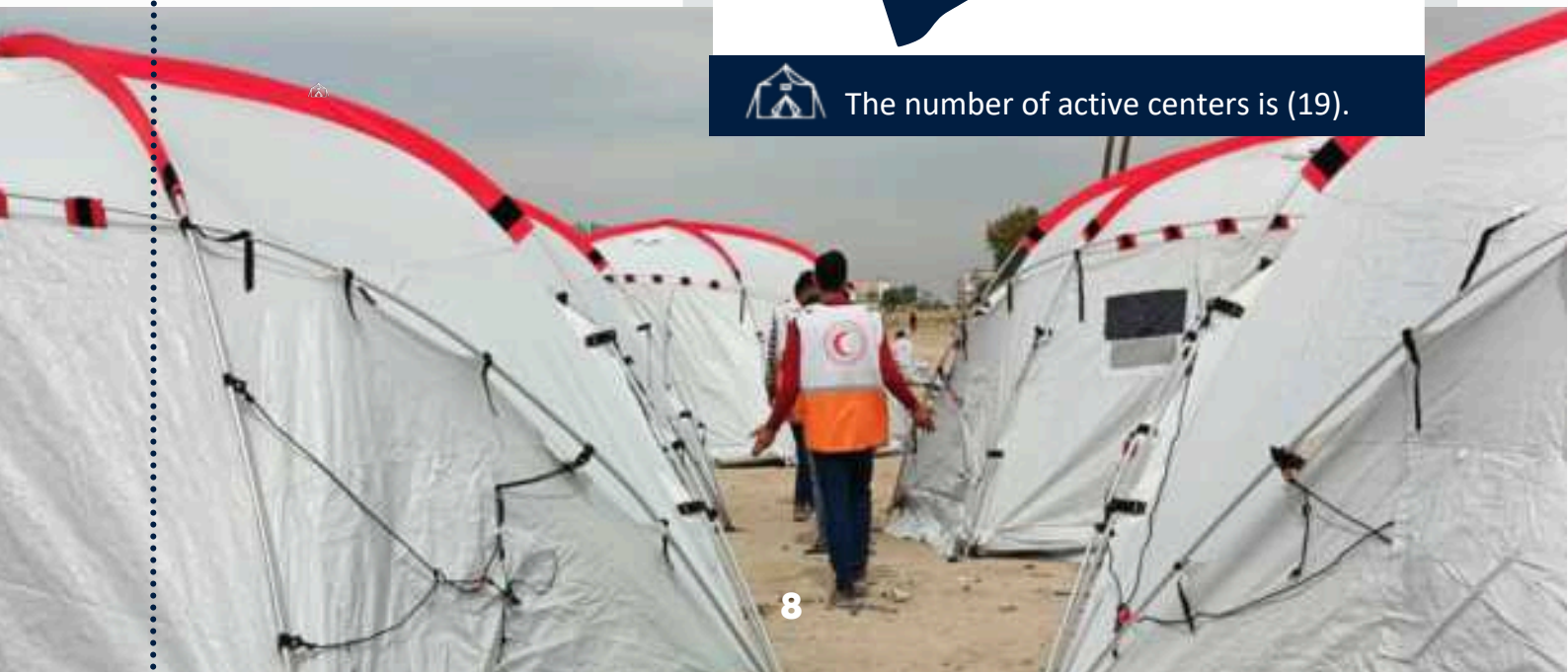
PRCS teams provide the following services to families residing in these shelter centers:

- Health and medical services, as well as psychosocial support
- Food and relief assistance
- Sanitation and water services
- Lighting and energy services

Displacement Shelter Centers



The number of active centers is (19).





Water, Sanitation, and Hygiene

Affected communities are provided with safe drinking water, access to safe and inclusive sanitation facilities and hygiene supplies



3600

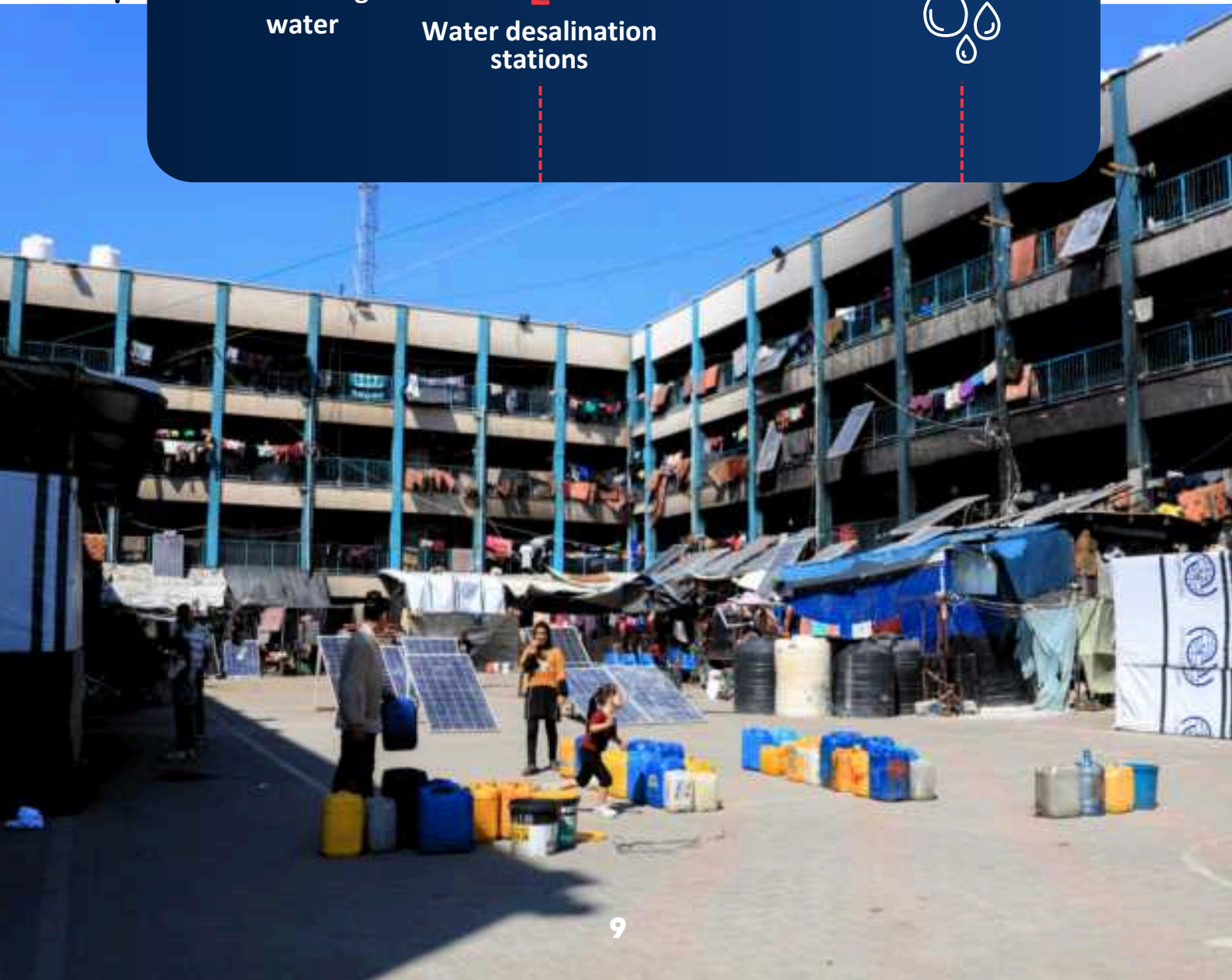
Beneficiaries
of drinking
water

3,843

Hygiene and
Dignity Parcels

2

Water desalination
stations





Relief Aid Trucks

The PRCS received 76 relief aid trucks during the reporting period.

The PRCS distributed 18 relief aid trucks to the affected communities through local partners, mainly the Ministry of Social Development.

Aid Trucks

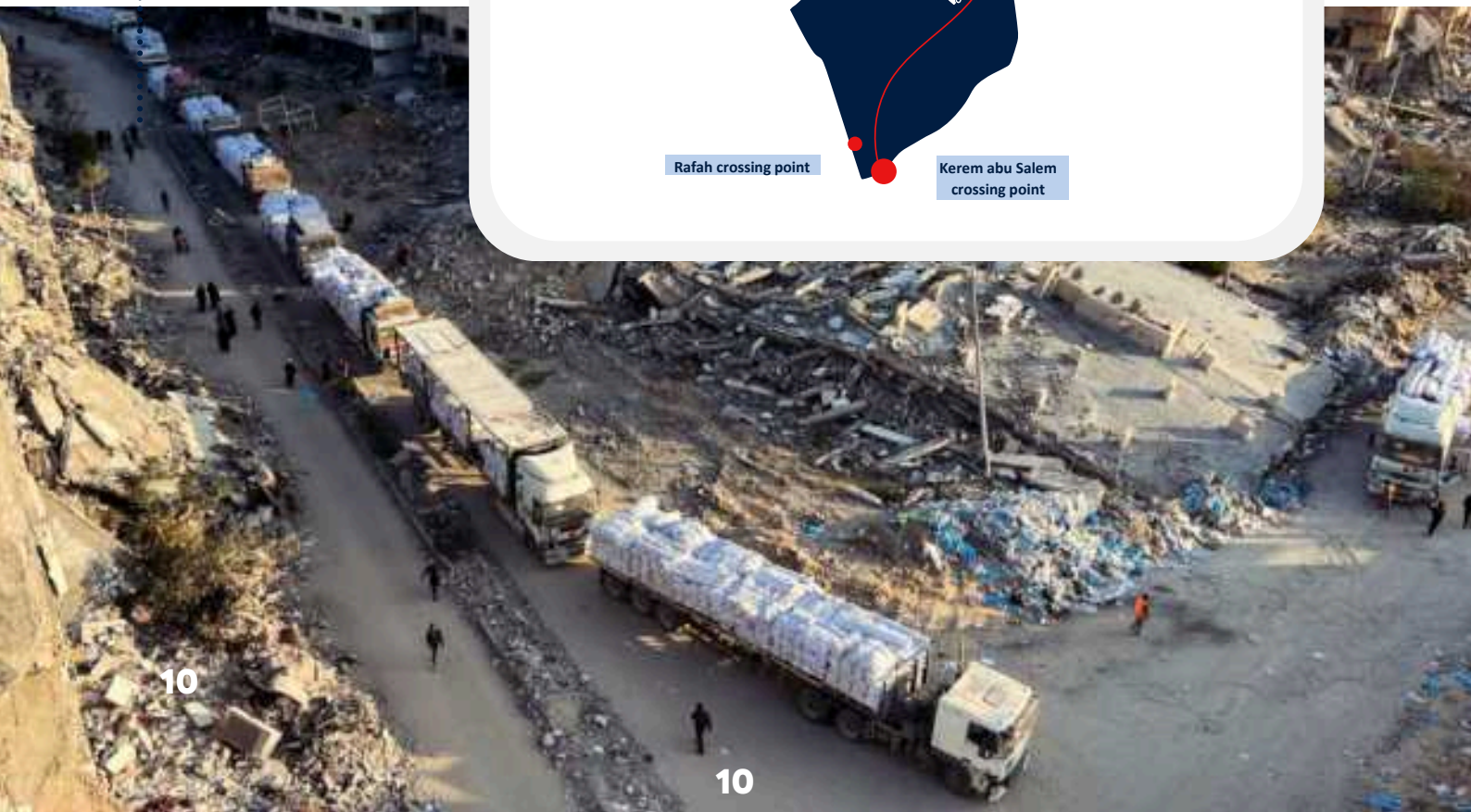
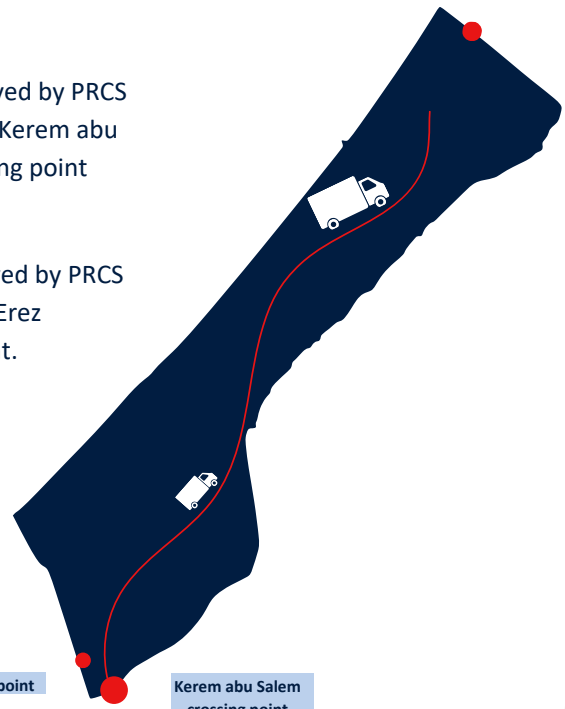
55 Trucks received by PRCS through the Kerem abu Salem crossing point

21 Trucks received by PRCS through the Erez crossing point.

Rafah crossing point

Kerem abu Salem crossing point

Erez crossing point

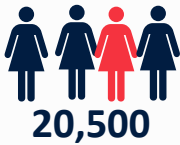


● Enhancing Community Resilience

Enhanced community resilience through holistic approach including health and social service.



35,097
Beneficiaries



20,500



14,597

Community Health Education

Health Points for Providing
Medical Care



● Rehabilitation and Capacity Building



1,140
Beneficiaries

Rehabilitation Centers: 934

Community Rehabilitation
Activities (Mobile Teams): 206

Assistive Tools: 0

PRCS teams provide different services for individuals with physical, hearing, and intellectual disabilities, including therapy, special education, family support, and speech therapy, at rehabilitation centers in Khan Younis and Deir al-Balah. Five mobile teams provide the same services across Gaza's five governorates.



WEST BANK

Health

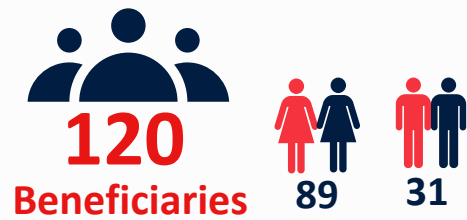


Emergency Medical Services

Providing ambulance and emergency services across all governorates of the West Bank, including occupied Jerusalem.

During the reporting period, the association activated an ambulance point in the town of Tammun to respond during the military operation there.

PRCS conducted about 5 First Responder and First Aid courses in the Jericho, Ramallah, and Al-Bireh governorates:



28

Martyr



329

Injuries



7564

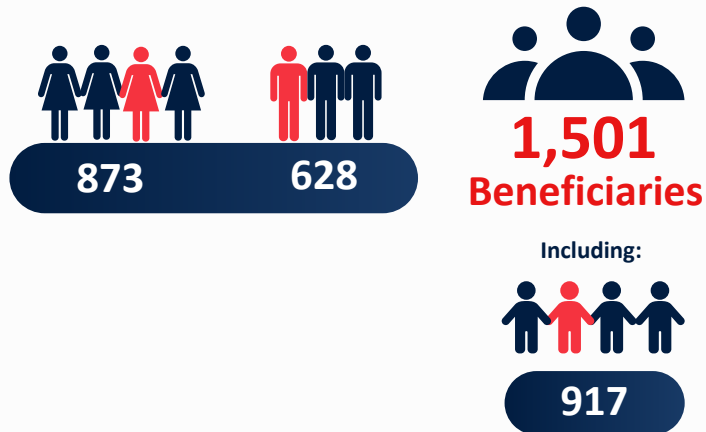
emergency medical cases





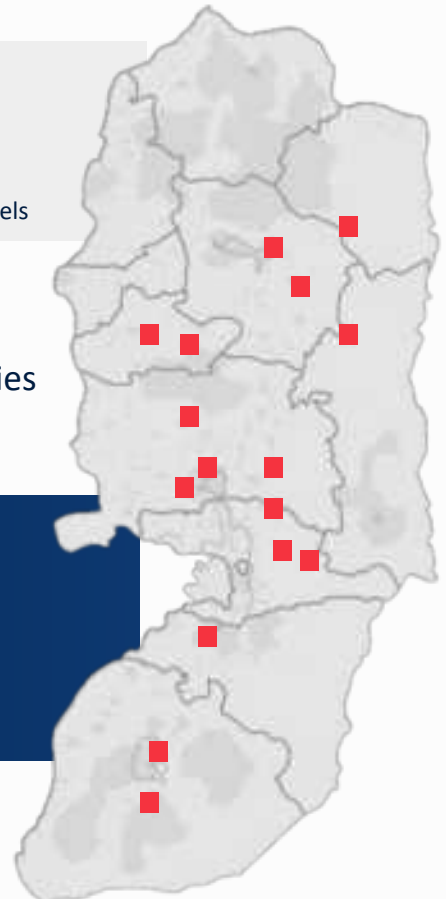
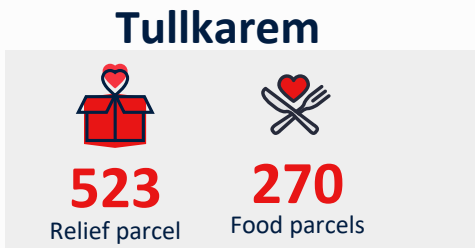
Psychosocial Support

During the reporting period, the teams focused their work in the Jenin and Tulkarem governorates with families who were subjected to forced displacement.



Relief

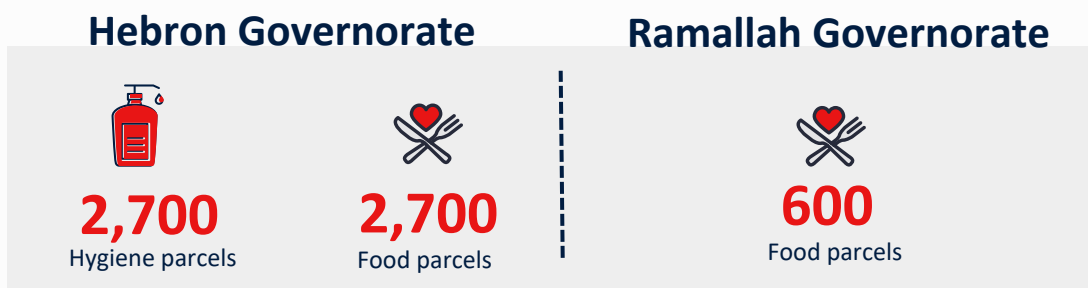
During the Israeli military operation in the Jenin and Tulkarem governorates, PRCS teams distributed:



The Red Crescent teams assisted in evacuating families who were forcibly displaced by the Israeli occupation.



In light of the difficult political, economic, and social conditions faced by many Palestinian communities due to the Israeli occupation and its measures, the PRCS carried out humanitarian campaigns during which it distributed the following:



Violations

West Bank

63

Violations

7 Denials	17 Patient Harassments	10 Crew Harassments
18 Delays	1 Attacks on Facilities	10 Vehicle Attacks

Gaza Strip

6

Violations

0 Denied	1 Attacks on Patients	3 Attacks on Vehicles
0 Delays	1 Facility Damaged	1 Attacks on Crews





For inquiries, please send emails
to: opsroom@palestinercs.org

www.PalestineRCS.org
info@PalestineRCS.org
[f](https://www.facebook.com/PalestineRCS) [i](https://www.instagram.com/PalestineRCS) [X](https://twitter.com/PalestineRCS) @PalestineRCS